



VAULTLOGIX ADVANTAGE

Release Notes

Version 11.2.0

Version 11.2.1

August 2012

Table of Contents

Table of Contents.....	1
11.2.0 New or Enhanced Features.....	2
Retention Policies Feature	2
Restore of Remote File backup with the Metadatabase.....	8
Turning the Metadatabase On or Off.....	9
Metadatabase folder added to list of Global Excludes	11
Restore Wizard File Loading Faster	11
Delete local storage when all local backupset profiles are deleted.....	11
Running the LocalCleaner.....	11
Client Restore Logs Files Deleted on Completion	12
11.2.1 New or Enhanced Features.....	12
Confirmation Dialog for Saved Backup Set Profile.....	12

11.2.0 New or Enhanced Features

Retention Policies Feature

Overview

In previous releases the retention policy was limited to specifying the number of backup versions to keep. The default is 14 generations and the user can specify any value between 1 and 9999. Specifying 0 tells Advantage to keep all versions. Advantage will keep the most recent number of versions specified, rolling off the oldest when a new version is created.

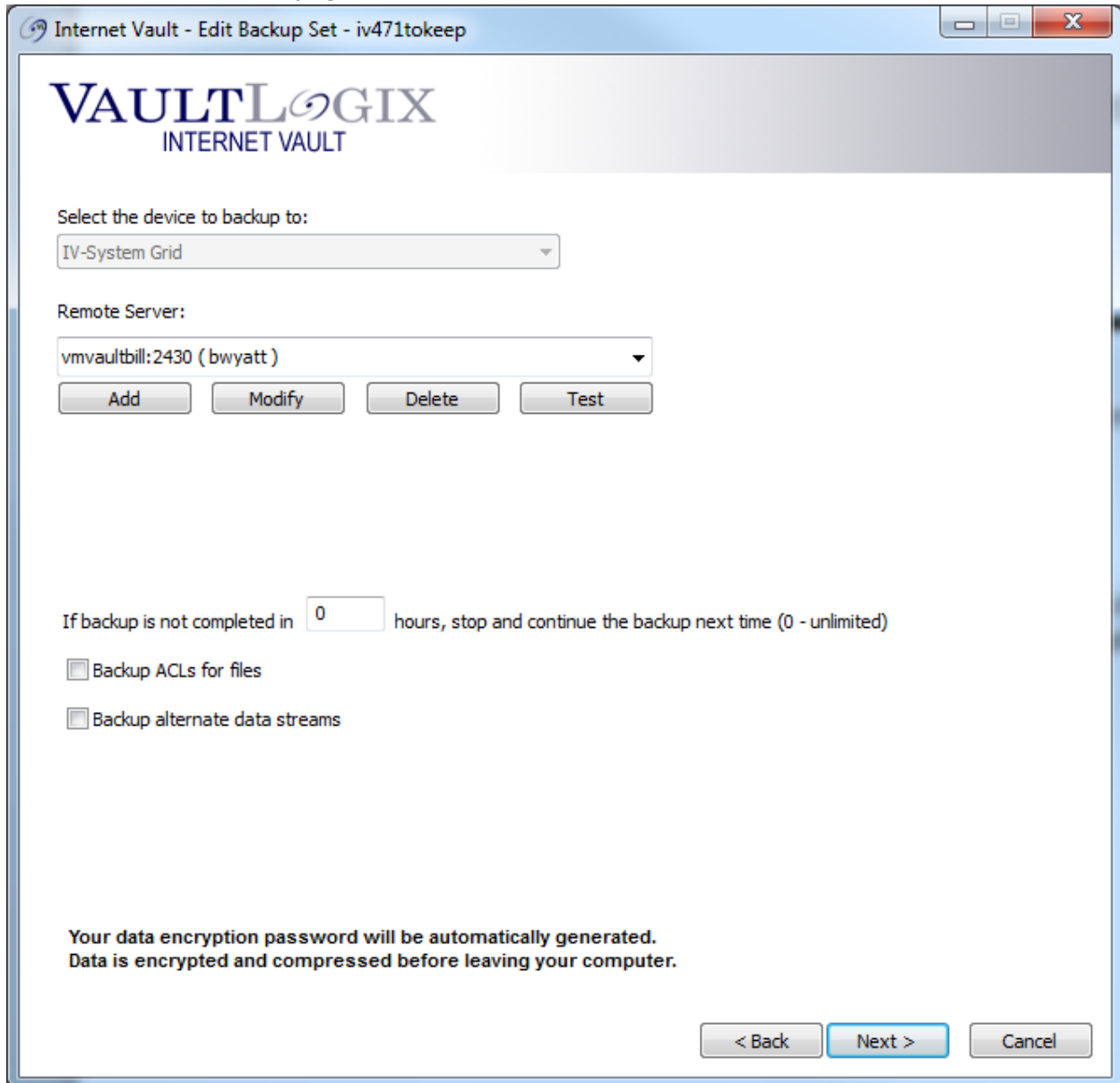
Most backup policies require a flexible retention policy. Beginning with this release, users can specify weekly, monthly and yearly retention rules. When a new version is created beyond the number of generations to keep the oldest version is normally deleted. Now with the addition of retention policies, instead of being automatically deleted it is first checked against the retention rules and retained if there is a match.

Each retention rule allows for customizable generation settings. For example, users can create a monthly retention rule to retain the version created on the first day of the month. If the user specifies 12 generations to keep, then the first of 12 months is retained. As with the default retention rule you can specify 0 to keep an unlimited number of versions matching this rule.

The Default Retention Rule

The controls for specifying the number of generations to keep have been removed from their current page in the wizard. The user can now specify this value by editing the default retention rule on the Scheduling page of the wizard.

The new version of this page is shown here:



Internet Vault - Edit Backup Set - iv471tokeep

VAULTLOGIX
INTERNET VAULT

Select the device to backup to:
IV-System Grid

Remote Server:
vmvaultbill:2430 (bwyatt)

Add Modify Delete Test

If backup is not completed in 0 hours, stop and continue the backup next time (0 - unlimited)

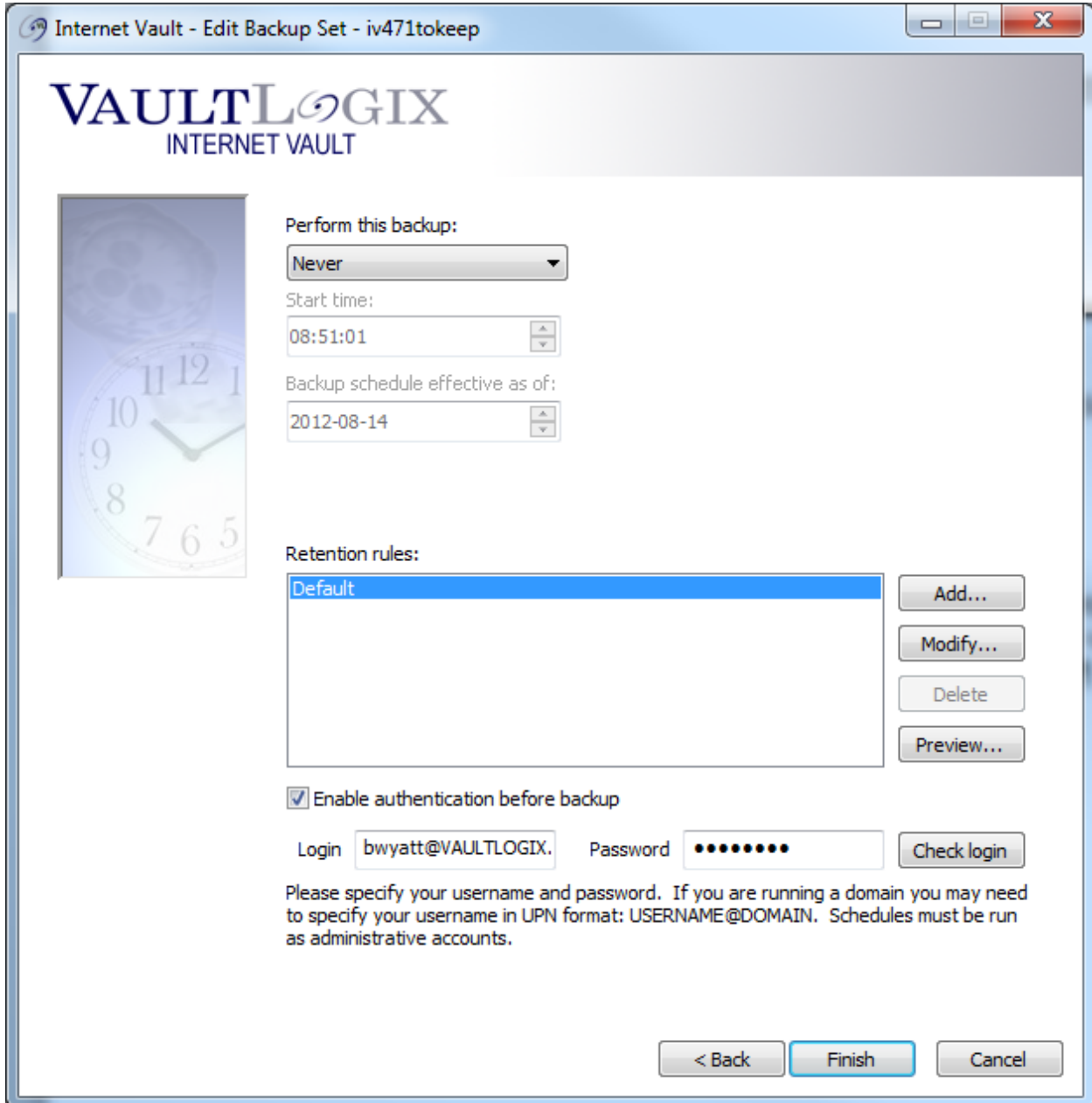
Backup ACLs for files
 Backup alternate data streams

Your data encryption password will be automatically generated.
Data is encrypted and compressed before leaving your computer.

< Back Next > Cancel

The New Scheduling Page

When the user creates a new backup set or edits an existing set the Scheduling page looks like this:



Internet Vault - Edit Backup Set - iv471tokeep

VAULTLOGIX
INTERNET VAULT

Perform this backup:
Never

Start time:
08:51:01

Backup schedule effective as of:
2012-08-14

Retention rules:

Default

Add...
Modify...
Delete
Preview...

Enable authentication before backup

Login bwyatt@VAULTLOGIX Password ●●●●●● Check login

Please specify your username and password. If you are running a domain you may need to specify your username in UPN format: USERNAME@DOMAIN. Schedules must be run as administrative accounts.

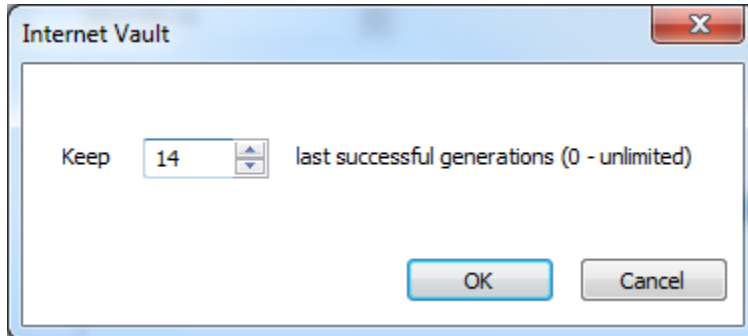
< Back Finish Cancel

The user can add new retention rules, modify existing rules, delete existing rules and modify the default rule. A dialog shows the user the backup versions that will be retained given the defined retention rules.

Modifying the Default Retention Rule

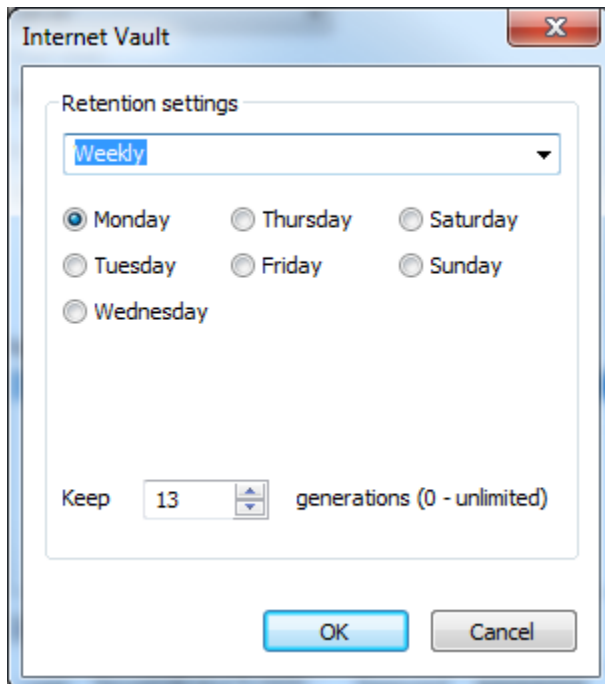
The default retention rule is defined by the user and specifies the number of generations to keep. The default value for a remote backup is 14 generations; for local and local with sync it is 5 generation. For Exchange and SQL the default retention rule is 6 generations.

Select the Default entry in the retention rules dialog and click the Modify button to change the value:



Adding a Retention Rule

Click the Add button to add a new retention rule. The Add, Modify Retention Rule dialog for a Weekly retention rule:



Weekly, monthly and yearly rules can be set. The Add, Modify Retention Rule dialog will default to one of these depending on the currently selected backup schedule.

Adding a Weekly Retention Rule

Click the Add button to open the Add, Modify Retention Rule dialog and select Weekly in the drop down. The day of the week will default to Monday. The number of generations to keep will default to 13. Select the day of the week, set the number of weeks to keep, and click OK. The dialog will close and you will see a new "Weekly" rule in the retention rules list. The user can add more than one weekly rule.

Adding a Monthly Retention Rule

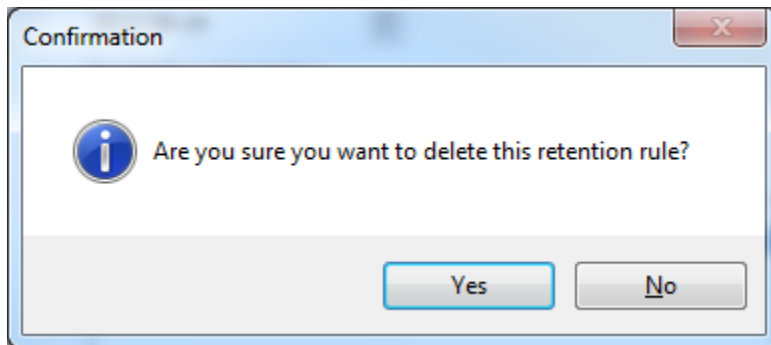
Click the Add button to open the Add, Modify Retention Rule dialog and select Monthly in the drop down. The day of the month will default to the current day and the number of generations to keep will default to 12. Select the day of the month, set the number of months to keep, and click OK. The dialog will close and you will see a new "Monthly" rule in the retention rules list.

Adding a Yearly Retention Rule

Click the Add button to open the Add, Modify Retention Rule dialog and select Yearly in the drop down. The month will default to the current month, the day of the month will default to the current day, and the number of generations to keep will default to 7. Select the month, day of the month, set the number of years to keep, and click OK. The dialog will close and you will see a new "Yearly" rule in the retention rules list.

Deleting a Retention Rule

Select the rule you want to delete in the retention rules list and click the Delete button. A confirmation is displayed:



Click Yes to delete the rule or No to cancel.

Note: The default retention rule cannot be deleted and the Delete button is disabled when the default rule is selected in the retention rules list.

Modifying a Retention Rule

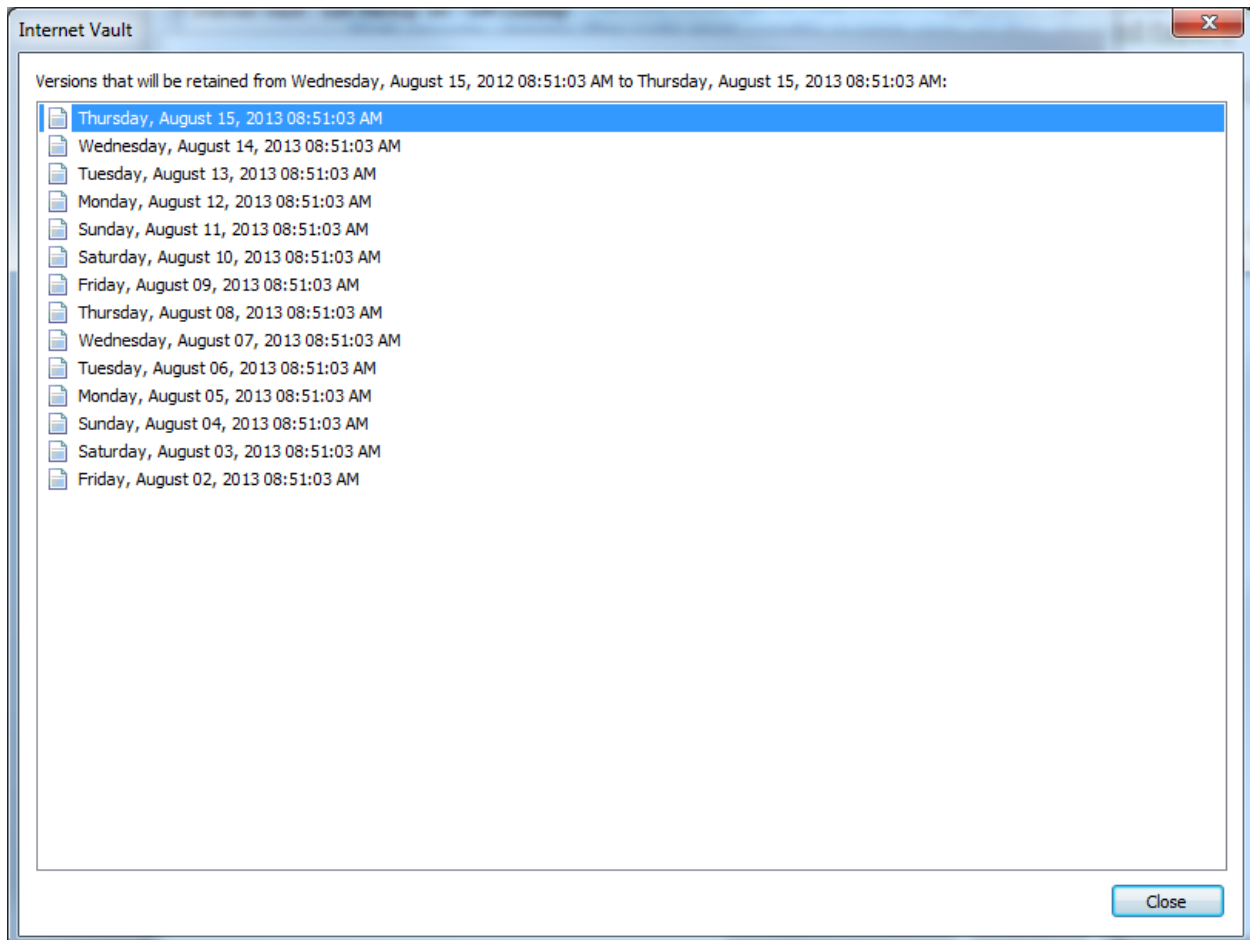
Select the rule you want to modify in the retention rules list and click the Modify button to open the Add, Modify Retention Rule dialog. The drop down for specifying the type of rule -

Weekly, Monthly, or Yearly - is disabled and shows the current type. To change a rule, the user must delete the rule and create a new one of the desired type.

Previewing Versions Retained

You can see the backup versions that will be retained for the next year based on the retention rules you have created and the backup schedule. Click the Preview button to see this list.

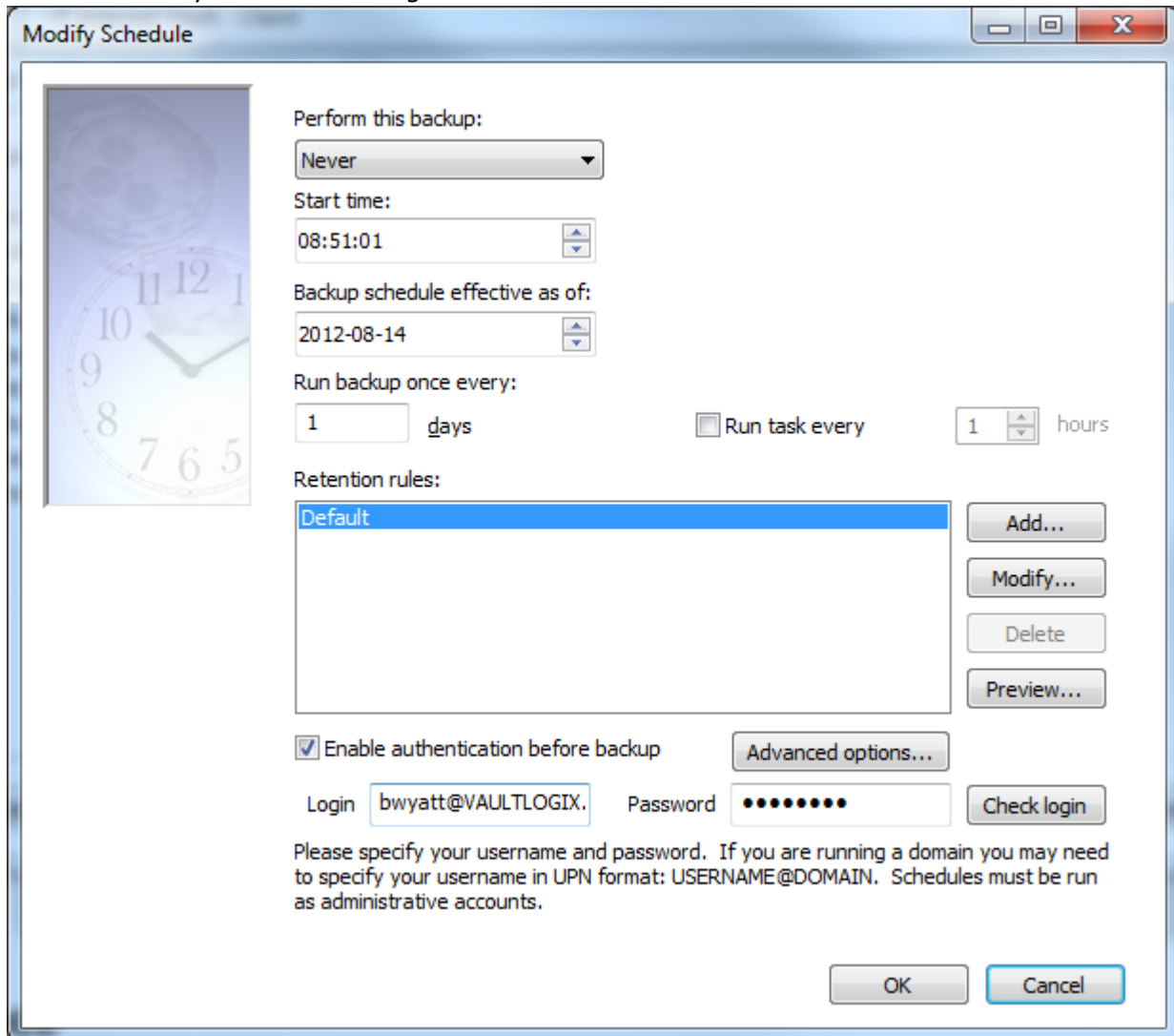
Preview Default Retention Rule of 14 Generations



The Modify Schedule Dialog

The Modify Schedule Dialog now includes retention rules just as the Scheduling page of the Create, Edit Backup Set Wizard.

The new Modify Schedule Dialog is shown here:



Restore of Remote File backup with the Metadatabase

Remote File backup sets create metadata (data about the backup data) during the backup and store it locally in a new Metadatabase. Restoring without using Backupsetindexer is possible for backup generations stored in the Metadatabase. The first remote backup after the 11.2.0 upgrade or initial install will set the NTFS Change Journal off for only that initial generation in order to fully populate the Metadatabase. The Metadatabase will be stored in the client data directory and have the same name as the backup set. By default the Metadatabase location will be: C:\ProgramData\BackupClient\metadata_db



The actual data for remote backup set files will still be stored on and restored from the vault.

By using the Metadatabase instead of Backupsetindexer there will no longer be the sometimes lengthy wait for its creation before the files can be obtained for file selection and there will be less demand on the vault servers.

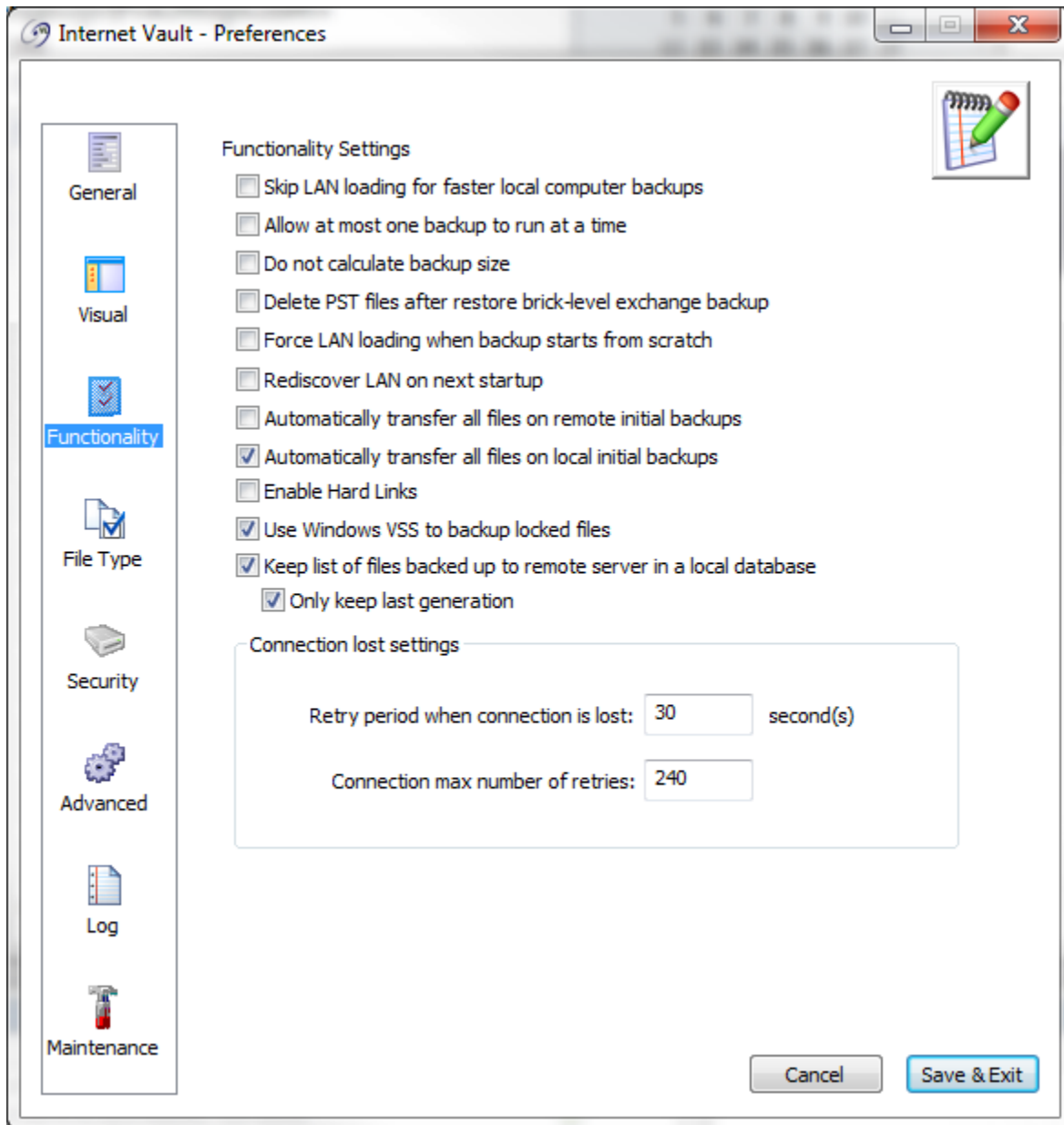
Conditions for using the Metadatabase on Remote Restore

The Metadatabase will be used for remote restores instead of the Backupsetindexer if the following conditions are met:

1. The generation selected to restore must have been backed up since upgrade/install to version 11.2.0.
2. The generation must exist correctly in the Metadatabase. If by error a generation selected to restore has more files in the Metadatabase than the same generation on the vault, then the Metadatabase generation will be deleted and the Backupsetindexer used instead. It is unusual but possible for a Metadatabase generation to have fewer files available than is stored for the generation on the vault, however if it does and it has the files to restore then the Metadatabase can be used to initiate restore.
3. Metadatabase usage must be enabled in the Windows Registry and will be set on by the software upgrade/install of 11.2.0. The location of the registry key is - Computer\HKEY_LOCAL_MACHINE\SOFTWARE\ROBODrs\ROBOBAK and the registry value is "dontUseIndex". dontUseIndex=1 means that Metadatabase usage is enabled and the remote backups will write generation info to the Metadatabase during backup and allow it to be used in restore of that generation. Should dontUseIndex=0 then the remote backups will NOT write to the Metadatabase nor allow it to restore from the Metadatabase.
4. When the dontUseIndex key is set it is also possible to set an additional key metaMaxOne that limits the Metadatabase generations kept to only the last generation. When this is set then only the last generation may be available to restore from without using the Backupsetindexer. This may be an option a user wants if they have a backup with a very large number of files and not much space locally for storing the Metadatabase. The setting will apply to the Metadatabases for all remote backupsets
5. The restore must be for File type backup sets through the Restore Wizard. Restores done by template search or command line operations will continue to use the Backupsetindexer. SQL and Exchange restores do not currently require the Backupsetindexer, and did not in 11.1.0 or before, and they will not use the Metadatabase in 11.2.0. Backups configured for alternate data streams are also disabled from using the Metadatabase.

Turning the Metadatabase On or Off

Use the client interface to configure Metadatabase usage



Two new check boxes have been added to the client Preferences Functionality dialog. The "Keep list of files backed up to remote server in a local database" checkbox enables a Metadatabase to be kept for each remote backup set and for the generations that are in the Metadatabases to be used in the restore of those generations. This will be checked by default.

Unchecking the “Keep list of files backed up to remote server in a local database” checkbox will result in all remote generations backed up after unchecking to not be written to the Metadatabase and so will not be available to use in restore – requiring Backupsetindexer usage. The old generations will remain in a Metadatabase unless data is deleted for the backup set from the client or they are manually deleted.

With the Metadatabase usage turned on the option to check “Only keep last generation” is also enabled. When checked then only the last generation or remote backup sets will be kept in the Metadatabase and only the last generation may be able to restore without using the Backupsetindexer. When this is not checked then the Metadatabase will be allowed to retain as many generations to match those retained for the remote backup set. This is unchecked by default.

Metadatabase folder added to list of Global Excludes

A new default pattern has been added to the list of excludes on the File Type page of the Preferences dialog. The pattern is `*\metadata/_db*`. This prevents the meta databases for remote backups from being backed up.

Restore Wizard File Loading Faster

Restore from local storage no longer needs to wait for full file population before allowing a selection and proceeding with restore. Subfolders appear in the file listing at the top of a folder.

Delete local storage when all local backupset profiles are deleted

If the user deletes all backup set profiles, and selects the "Delete Data" option, all data associated with the backup set profiles will be deleted, regardless of where the user has chosen to store them in the file system. The local block storage will be deleted along with all other data associated with the backup set profiles.

Running the LocalCleaner

The LocalCleaner is a console application. When it runs, if it is launched into an interactive session it will open a console window, minimized, in the system tray on the currently logged in user's desktop.

If the cleaner is not launched into an interactive session, it will not display any user interface at all. This will happen if the cleaner is launched on Windows Vista, Windows 7, or Windows 2008 R2, using account credentials other than those of a currently logged in user.

If the local cleaner is running during a client installation, it will stop or sleep until the installation is complete. This is corrected and the LocalCleaner.exe file will always be updated with the rest of the client files.

Client Restore Logs Files Deleted on Completion

The restore log files are deleted after the restore completes and the user will no longer see new ones added to the BackupClient\Logs directory. It is safe to delete any existing ones since they are permanently stored on the vault.

11.2.1 New or Enhanced Features

Confirmation Dialog for Saved Backup Set Profile

When saving a change to a remote backup set profile, if one of the following is true:

1. There are changes to retention rules
2. There are changes to the number of generations to keep
3. There are unfinished generations included in the generation count

Then a new message box will appear asking the user if they wish to delete the generations now considered "extra". In some cases the deletion of these generations may take time.

If the user clicks on the "No" button, then they will not need to wait and the generations that would have been deleted will be deleted at the end of the next backup for that profile.

